



RPYC Wednesday Summer Series Special Course Race - 10th January 2024

The start will be located in the vicinity of Poplar Buoy with the Race Committee Vessel being "Challenger". The start line description is as per Start Line "B" in the Redbook.

Start Times	
Division A	1500
Division B	1505
Division C	1510

Division A		
Start in the vicinity of Poplar Buoy		
Crawley Buoy	45	Port
Outer Start		Starb.
Green Day Buoy		Port
Orange Day Buoy		Port
Knot Spit	14	Starb.
Yellow Day Buoy		Port
Poplar Buoy	47	Port
Crawley Buoy	45	Port
Outer Start		Starb.
Green Day Buoy		Port
Orange Day Buoy		Port
Knot Spit	14	Starb.
Yellow Day Buoy		Port
Poplar Buoy	47	Port
Crawley Buoy	45	Port
Outer Start		Starb.
Green Day Buoy		Port
Orange Day Buoy		Port
Knot Spit	14	Starb.
Yellow Day Buoy		Port
Poplar Buoy	47	Port
Crawley Buoy	45	Port
Finish in a South Easterly direction		

Division B		
Start in the vicinity of Poplar Buoy		
Crawley Buoy	45	Port
Outer Start		Starb.
Green Day Buoy		Port
Orange Day Buoy		Port
Knot Spit	14	Starb.
Yellow Day Buoy		Port
Poplar Buoy	47	Port
Crawley Buoy	45	Port
Outer Start		Starb.
Green Day Buoy		Port
Orange Day Buoy		Port
Knot Spit	14	Starb.
Yellow Day Buoy		Port
Poplar Buoy	47	Port
Crawley Buoy	45	Port
Outer Start		Starb.
Matilda		Port
Yellow Day Buoy		Port
Poplar Buoy	47	Port
Crawley Buoy	45	Port
Finish in a South Easterly direction		

Division C		
Start in the vicinity of Poplar Buoy		
Crawley Buoy	45	Port
Outer Start		Starb.
Green Day Buoy		Port
Orange Day Buoy		Port
Knot Spit	14	Starb.
Yellow Day Buoy		Port
Poplar Buoy	47	Port
Crawley Buoy	45	Port
Outer Start		Starb.
Green Day Buoy		Port
Orange Day Buoy		Port
Knot Spit	14	Starb.
Yellow Day Buoy		Port
Poplar Buoy	47	Port
Crawley Buoy	45	Port
Finish in a South Easterly direction		

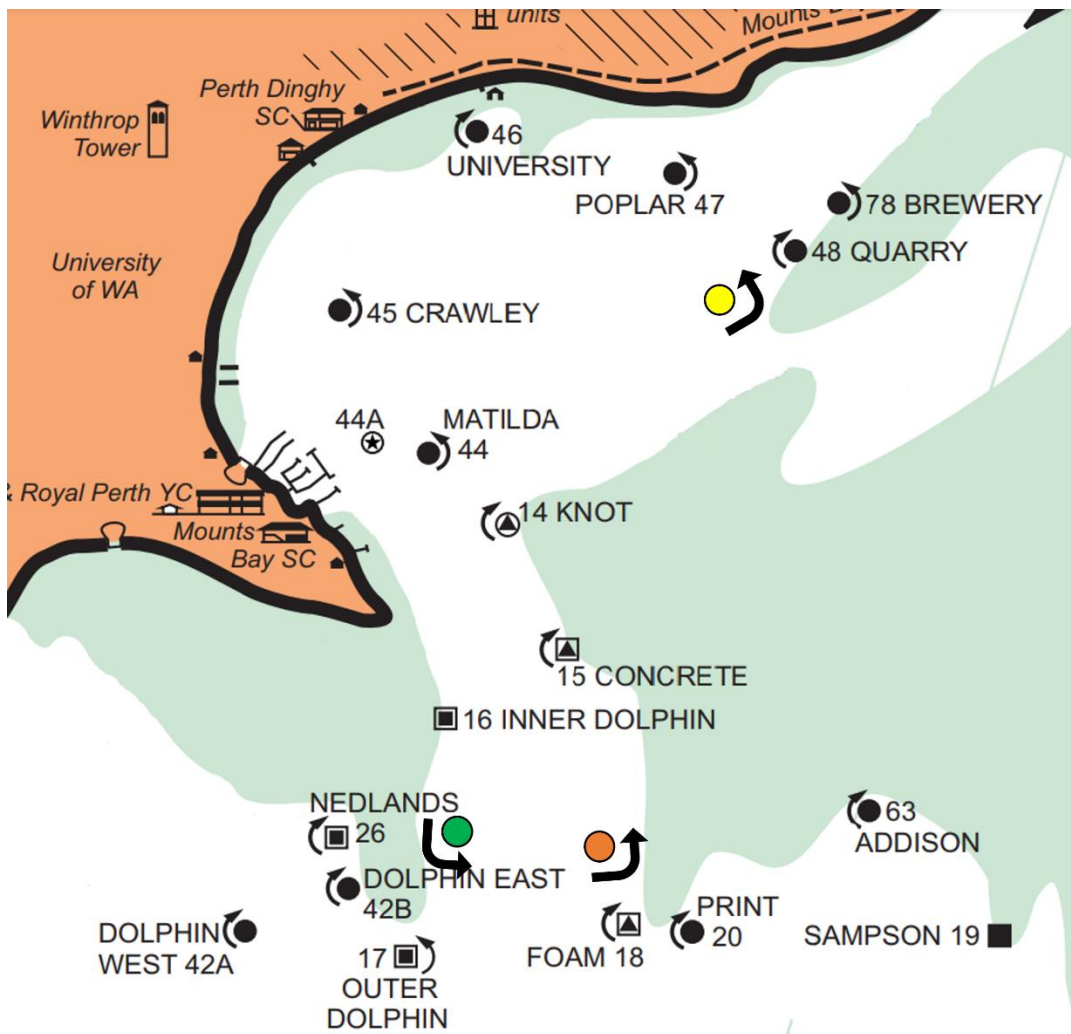


Notice to Competitors

RPYC Wednesday Summer Series

Special Course Map, 10 January 2024 ONLY

Below is a map indicating the Buoys to be used for the Special Course on Wednesday, 10 January 2024.



Anna Klyne (Boating Administrator)
19 December 2023