



Etchells

**2021 International Etchells
WA State Championships
&
ESRF World's Qualifier**

Saturday 6 and Sunday 7 March 2021

Organising Authority
Royal Perth Yacht Club (RPYC)
in conjunction with the International Etchells Swan River Fleet Inc.

Host Club
Royal Perth Yacht Club

NOTICE OF RACE

1 RULES

- 1.1 The regatta will be governed by the Rules as defined in the Racing Rules of Sailing 2021-2024 (RRS) as modified by the Sailing Instructions.
- 1.2 The Australian Sailing Special Regulations Part 1 Category 7 shall apply, competitors are also required to sign the modified safety declaration enclosed.
- 1.3 The Championship is classified as a Class C event as sanctioned by the International Etchells Class Association.
- 1.4 Racing Rule 44 will be changed see item 10 *Penalty System*.
- 1.5 In the event of a conflict between the Notice of Race and the Sailing Instructions, the Sailing Instructions shall prevail (this changes RRS 63.7).

2 ADVERTISING

In accordance with the International Etchells Class Rules and World Sailing Regulation 20.5.1, no advertising shall be displayed pursuant to World Sailing Regulation 20.3.2 (advertising chosen by the Person in Charge on sails, spars and hulls) with the exception of advertising displayed by Youth Teams given prior written approval.

3 ELIGIBILITY AND ENTRY

- 3.1 All helmsmen and crew shall be 2020-21 season financial members of the International Etchells Class Association and the Etchells Swan River Association, prior to entering the event.
- 3.2 All competitors shall comply with International Etchells Class Rules and World Sailing Eligibility Code.
- 3.3 The weights and total combined weight of each crew member of each boat will be determined prior to racing to ensure compliance with International Etchells Class Rule C.2.2. The total combined crew weight of each boat will be published on the Official Notice Board.
- 3.4 Each crew member on each boat shall be weighed at Registration which will occur at the RPYC Boating Operations Office on Thursday 4 March and Friday 5 March between the hours of 1400 and 1730. Registration and weigh in may be permitted outside these hours upon written request to the Boating Office.
- 3.5 Crew substitutions shall not be permitted for the purpose of making the weight limit.
- 3.6 A boat upon entering shall also supply copies of its Hull and Spar Measurement Certificate, as well as the boats valid insurance documentation with 3rd party liability insurance not less than \$10m.
- 3.7 Entries shall be made using the online entry form [HERE](#) by 1700 Monday 1 March 2021. The entry form is also available on the RPYC website [HERE](#) and the ESRF website at www.etchellsswanriver.com
- 3.8 Late entries may be accepted at the discretion of the Organizing Authority if accompanied by a late fee.

4 FEES

- 4.1 Regatta entry fee is \$250.00 (inc.GST).
Payments shall be made to:
BSB: 066 102
Account No: 0090 2360
Account Name: Etchell Swan River Fleet
Description: Boat Name

5 SCHEDULE

5.1 A maximum of 9 races will be conducted for the series.

5.2 Event	Day	Date	Time
Registration & weigh in	Thur & Fri	4 & 5 Mar 2021	1400 – 1730 RPYC
Races	Saturday	6 Mar 2021	Warning Signal 0900
Races	Saturday	6 Mar 2021	Warning Signal 1630
Races	Sunday	7 Mar 2021	No earlier than 0900
Presentation	Sunday	7 Mar 2021	

After the completion of the last race and will be held at The Catalina Bar at RPYC

5.3 It is intended that racing will commence on both days at the time scheduled, however the Organising Authority reserves the right to change these times should the prevailing conditions dictate. Any change to the schedule will be displayed on the Official Notice Board before 18:00hrs on the day before it will take effect and notification via email will be attempted to be made to all skippers. Failure to note the scheduled times shall not be grounds to request redress.

5.4 At completion of a race, to signify an additional race will follow, the Race Committee will display Code Flag R.

6 REGISTRATION AND MEASUREMENT

6.1 All boats shall complete registration with the Organising Authority at the RPYC Boating Operations Office between Thursday 4 and Friday 5 March between the hours of 1400 - 1730. Registration and weigh in may be permitted outside these hours upon written request to the Boating Office.

6.2 All boats shall present current original Measurements Certificates and insurance documents at registration.

6.3 All sails which competitors intend to use during the regatta are to be correctly recorded on the boats sail card prior to registration.

6.4 Competitors will be allowed to record 1 mainsail, 2 spinnakers and 2 jibs for the event.

7 SAILING INSTRUCTIONS

The sailing instructions will be available at on the event website.

8 RACING AREA

The races will be conducted on Melville Water West as shown in Appendix 1.

9 THE COURSES

The Courses will be windward/leeward and fully described in the Sailing Instructions.

10 PENALTY SYSTEM

10.1 The penalty for breaking a rule of Part 2 shall be a One Turn Penalty (one tack and one gybe in the same direction) except that for infringements within the Zone, as defined in the RRS, shall be a Two Turns Penalty (two tacks and two gybes in the same direction). This changes RRS 44.1 and 44.2.

10.2 A boat that has taken a penalty under rule 44.1 or retired shall complete an acknowledgement form at the Regatta Office within the Protest Time Limit.

11 SCORING

11.1 Three (3) races are required to constitute a series.

11.2 When fewer than five (5) races have been completed, a boats series score will be the total of her race scores. This amends RRS Appendix A2.

11.3 When five (5) or more races have been completed a boats series score will be the total of her race scores excluding her worst score.

12 SUPPORT BOATS

12.1 Coaches and other support personnel shall stay outside areas where boats are racing

from the time of the first warning signal of the day until racing has been concluded for the day.

- 12.2 Competitors shall have no communication with, and boats shall not be tied to, coach or support boats from the first warning signal each race day until racing has been concluded for the day.
- 12.3 Between races, coach and support boats shall not approach, communicate or transfer provisions or equipment with their supported boats except in an emergency threatening the health of the crew or the flotation of the boat and with the express permission of the Race Committee

13 RADIO COMMUNICATION

- 13.1 Boats must carry a marine band VHF receiver capable of receiving and transmitting Marine VHF channels. Boats may use the radio to report retirement from racing and may use the radio to request assistance in an emergency.
- 13.2 The Race Committee may use VHF radio to advise competitors of general matters relating to the racing.
- 13.3 The use of mobile/cell phones, watches or any device capable of sending and/or receiving external electronic communication and/or connecting to the internet is prohibited after the first warning signal on each race day until the boat has completed its days racing, except as provided in clause 14.1 or in an emergency threatening the safety of any member of the crew or the flotation of the boat and only with the express permission of the Jury or the Race Committee.

14 PRIZES

- 14.1 Prizes will be awarded to boats finishing 1st, 2nd & 3rd in the regatta.
- 14.2 Other prizes may be awarded at the discretion of the Organizing Authority.

15 DISCLAIMER OF LIABILITY

- 15.1 It is the competitor's decision to enter the Event or to start and continue in any race. Competitors shall accept that their participation in the Event is at their exclusive risk in every respect. By way of entry in the Event competitors must indemnify the Organizing Authority, their officers, members, staff and agents in respect to all claims and demands of whatever nature which may be made upon them in connection with or howsoever arising from their participation or intended participation in the Event.
- 15.2 The Organizing Authority their officers, members, staff and agents accept no responsibility in respect of loss of life, personal injury or loss or damage to property which may be sustained by reason of their participation or intended participation in the Event or howsoever arising in connection with the Event.
- 15.3 Competitor attention is drawn to RRS 4 - Decision to Race.

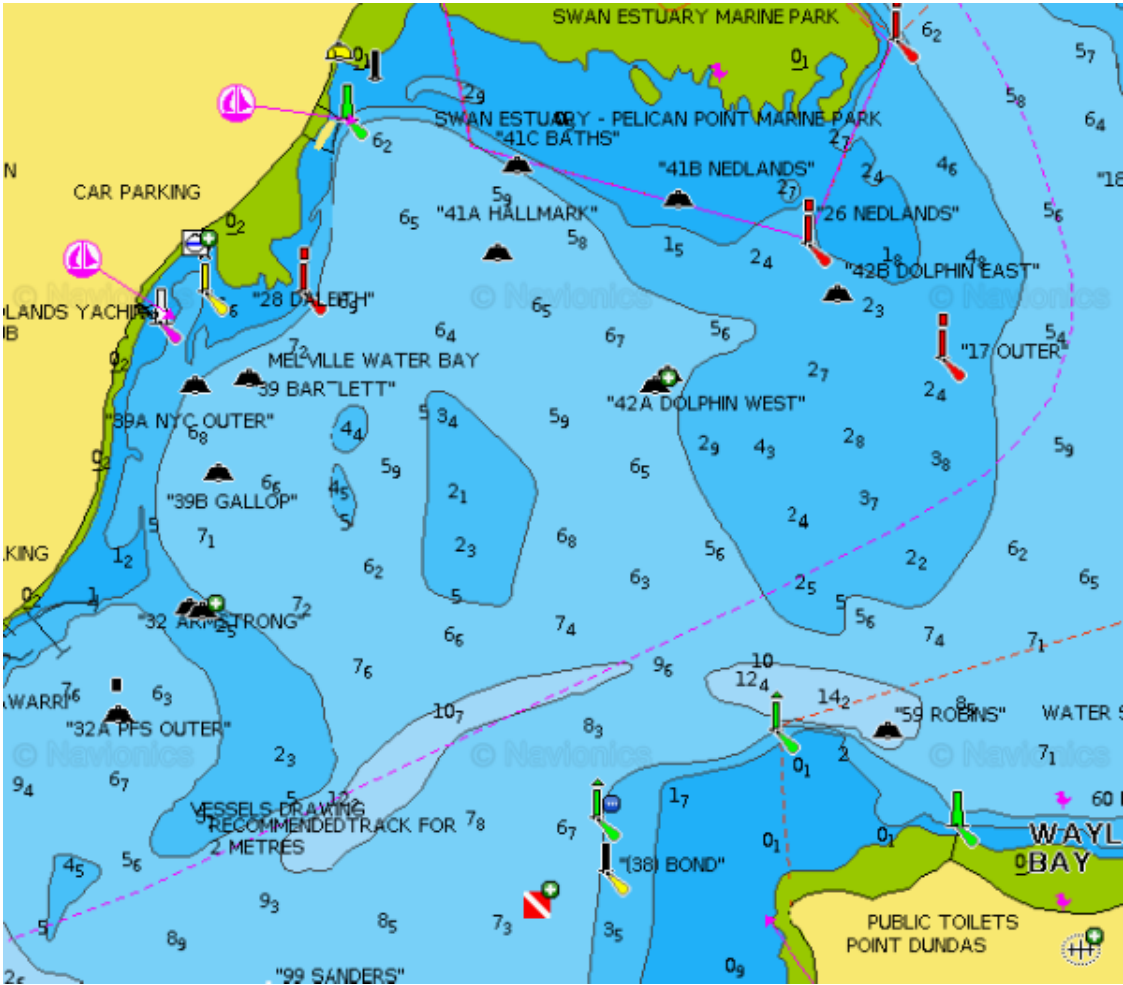
16 INSURANCE

Each participating boat must be insured with current Third Party Property Liability Insurance cover and Third Party Personal Liability Insurance of not less than AU\$10,000,000 (ten million) or equivalent thereof in any other currency for any incident.

17 FURTHER INFORMATION

Travis Burtenshaw
Boating Operations Manager, RPYC
9389 1555
boatingoperations@rpyc.com.au

Appendix 1 – Race Area



2021 International Etchells WA State Championships

Saturday 6 and Sunday 7 March 2020

Appendix 3

Australian Sailing Special Regulations Equipment Category 7 (modified)

Boat Name _____ Sail Number _____

Boat Skipper _____

Tick the box confirming compliance

Mandatory equipment as per class rule C 5	<input type="checkbox"/>
VHF	<input type="checkbox"/>
Cockpit knife	<input type="checkbox"/>
First aid kit	<input type="checkbox"/>
Crew has completed MOB drill in last 6 months	<input type="checkbox"/>
PFD (Each Crew Member)	<input type="checkbox"/>
Anchor & Line	<input type="checkbox"/>
Tow Rope – 20 Meters	<input type="checkbox"/>

Skipper _____

Signed _____ Date ____/____/____