



# CLUB MARINE NORTHERN TOUR

APRIL 26<sup>TH</sup>-28<sup>TH</sup> 2019



Photo courtesy of Tom Baric



### THREE DIVISIONS:

Racing, Cruising and Power Cruise in Company.

## SAILING INSTRUCTIONS

For all information, the NoR and to enter, please visit [www.rpyc.com.au](http://www.rpyc.com.au)



**CLUB MARINE NORTHERN TOUR**  
**Friday 26<sup>th</sup> to Sunday 28<sup>th</sup> April 2019**

## **Sailing Instructions**

A competitor briefing will be held at 1000 on Friday the 26<sup>th</sup> of April at the RPYC Annexe.

**1 ORGANISING AUTHORITY (OA)**

The Organising Authority is Royal Perth Yacht Club (Inc.) (RPYC) Australia II Drive, Crawley.

**2 RULES**

- 2.1 The regatta will be governed by the rules as defined in the Racing Rules of Sailing (RRS), the Australian Sailing Special Regulations, the rules of the respective classes (except as any of these are altered by the Sailing Instructions), and by the Sailing Instructions.
- 2.2 Boats with permanently installed moveable or variable ballast may utilise such systems for the purpose of increasing stability and may use stored power for these purposes. Boats with permanently installed electric/hydraulic winches may use stored power. This changes rules 51 and 52.
- 2.3 RRS 55 is changed by adding the following sentence to the rule: 'However, discarding elastic or wool bands when setting a sail shall not be a breach of this rule.'
- 2.4 The TCF handicapping system will be used for Divisions 1 & 2. Handicaps will be allocated by the OA.

**3 NOTICES TO COMPETITORS**

Notices will be posted on the RPYC website (<https://www.rpyc.com.au/events/2018-club-marine-northern-tour/>)

**4 CHANGES TO SAILING INSTRUCTIONS**

Any change to the Sailing Instructions will be posted on the RPYC website and the official noticeboard before 0700 on the day it will take effect, except that any changes to the schedule of races will be posted by 1900 on the day before it will take effect.

**5 SIGNALS MADE ASHORE**


- 5.1 Signals made ashore will be displayed on the flagpole to the North of the RPYC Annexe or otherwise on the Flag Pole of the Committee Boat (Challenger).
- 5.2 A signal displayed over a division flag means it applies to that division only.
- 5.3 When flag AP is displayed ashore, '1 minute' is replaced by 'not less than 55 minutes' in the rule Race Signal AP, this changes Race Signals.

**6 SCHEDULE AND DATES OF RACES**

- 6.1 **Attachment A** – *Schedule of Races* details dates, divisions and the time of warning signals.

## 7 CLASS FLAGS

For the purpose of these Sailing Instructions including rule 26, the word “Division” has the same meaning as “class”. This changes rule 26. The Division will be:

Division 1 – Racing	Naval numeral 1	
Division 2 – Cruising	Naval numeral 2	
Division 3 – Power	Naval numeral 3	

## 8 RACING AREAS

**Attachment B** – *Racing Areas* shows the location of the racing areas and the approximate passage courses.

## 9 THE COURSES

- 9.1 **Attachment C** – Stipulates the *Race Courses*, the order in which marks are to be passed, the side on which each mark is to be left and the approximate length of each race.
- 9.2 In addition to flag signals and prior to the starting signal, for the convenience of competitors the start boat will broadcast the course to be sailed on VHF Channel 77. Failure to make or receive the said broadcast shall not be grounds for boats to seek redress.
- 9.3 Day buoy: when a day buoy is used it will be laid approximately 0.5nm to windward of the starting line. Prior to the warning signal if a day buoy is to be used, the start boat will display a red or green flag under a yellow flag. A red flag means the day buoy shall be left to port. A green flag means the day buoy shall be left to starboard.

## 10 MARKS

- 10.1 Descriptions including name, type and GPS co-ordinates are listed in **Attachment D** – *Race Marks*.
- 10.2 The day buoy mark will be an orange inflatable buoy.
- 10.3 **Starting line – passage races:** The starting line will be between the staff displaying an orange flag on the committee boat at the starboard end and an orange pimple buoy at the port end.

## 11 THE START

- 11.1 Races for Divisions 1 & 2 will be started using RRS 26 with the warning signal given 5 minutes before the starting signal.
- 11.2 Boats in Divisions 1 & 2 shall sign on for each race. To sign on boats shall contact the Race Committee on VHF CH 77 and confirm the POB, boats must receive a reply from the Race Committee for confirmation of signing on. [DP]
- 11.3 To alert boats that a race or sequence of races will start soon, the orange starting line flag will be displayed with one sound at least four minutes before a warning signal is displayed.
- 11.4 Boats whose warning signal has not been made shall avoid the starting area during the starting sequence for other divisions. [DP]
- 11.5 The starting line for passage races will remain open for any boat for 4 minutes after the starting signal for the last fleet of that start sequence. Boats starting later than that time will be scored ‘Did Not Start’ without a hearing. This changes rule A4.

- 11.6 Boats will be started generally in the sequence listed in Attachment A - *Schedule of Races*. Divisions may be combined or the starting order amended by the race committee, changes will be indicated by the division flags displayed.
- 11.7 Individual recalls – In addition to the normal signals as per rule 29.1 the boat names and/or sail numbers of recalled boats will be broadcast on VHF Channel 77 by the RC after the recall signal. Failure of the RC to broadcast or boats to receive the recall broadcast shall not be grounds for the boats to seek redress. This changes rule 62.1(a)
- 11.8 General recall – when a general recall is signalled, the signal shall be displayed for one minute only.
- 11.9 Boats in Division 3 may assemble in the appropriate starting area for that leg at the designated time and await a call from the lead boat.
- 11.10 Details of the starting procedure and passage for Division 3 will be outlined at the competitors briefing.

## **12 THE FINISH – Passage Races**

- 12.1 The finishing line for passage races will be between a staff bearing an orange flag on the finish boat at one end and an orange pimple buoy at the other end. The position of the finishing area will be described in the course.

## **13 TIME LIMITS**

Time limits for each division will be as follows;

For passage races: A boat failing to finish before 1800 on any racing day will be scored DNF.

This changes rule A4

## **14 PROTESTS AND REQUESTS FOR REDRESS**

- 14.1 Protest forms are available from the mobile Race Office (Race Committee Boat). Protests shall be delivered there within the protest time limit.
- 14.2 Protest time limit – for each division, the protest time limit is one hour after the last boat in that division has finished.
- 14.3 On the last day of the regatta a request for reopening a hearing shall be delivered to the regatta office;
- a) Within the protest time limit if the party requesting reopening was informed of the decision on the previous day,  
Or
- b) No later than 30 minutes after the party requesting reopening was informed of the decision on that day.  
This changes rule 56.
- 14.4 Protest hearings – details of the time and place of the hearings will be posted on the official regatta noticeboard on the mobile race office within 30 minutes of the protest time limit. For the passage races, the notice will be posted by 0830 the following day.
- a) Such notice will be deemed to be notice to the parties in accordance with RRS 61.1(b) and 63.2.



- b) The protest committee may award an appropriate penalty at its discretion for an infringement of a particular sailing instruction where disqualification is clearly more excessive.

The penalty for a rule infringement shall be at the discretion of the RC [DP]

#### 14.5 Arbitration

Arbitration will be conducted under RRS Appendix T

##### T1 POST-RACE PENALTIES

(a) Provided that rule 44.1(b) does not apply, a boat that may have broken one or more rules of Part 2 or rule 31 in an incident may take a Post- Race Penalty at any time after the race until the beginning of a protest hearing involving the incident.

(b) A Post-Race Penalty is a 30% Scoring Penalty calculated as stated in rule 44.3(c). However, rule 44.1(a) applies.

(c) A boat takes a Post-Race Penalty by delivering to the arbitrator or a member of the protest committee a written statement that she accepts the penalty and that identifies the race number and where and when the incident occurred.

##### T2 ARBITRATION MEETING

An arbitration meeting will be held prior to a protest hearing for each incident resulting in a *protest* by a boat involving one or more rules of Part 2 or rule 31, but only if each *party* is represented by a person who was on board at the time of the incident. No witnesses will be permitted. However, if the arbitrator decides that rule 44.1(b) may apply or that arbitration is not appropriate, the meeting will not be held, and if a meeting is in progress, it will be closed.

##### T3 ARBITRATOR'S OPINION

Based on the evidence given by the representatives, the arbitrator will offer an opinion as to what the protest committee is likely to decide:

(a) the *protest* is invalid,

(b) no boat will be penalised for breaking a rule, or

(c) one or more boats will be penalised for breaking a rule, identifying the boats and the penalties.

##### T4 ARBITRATION MEETING OUTCOME

After the arbitrator offers an opinion,

(a) a boat may take a Post-Race Penalty, and

(b) a boat may ask to withdraw her *protest*. The arbitrator may then act on behalf of the protest committee in accordance with rule 63.1 to allow the withdrawal.

Unless all *protests* involving the incident are withdrawn, a protest hearing will be held.

## **15 SCORING**

- 15.1 The low points scoring system of Appendix A will apply.  
**Division 1, 2:** Two races are required to constitute a series. There will be no drops.  
This changes rule A2.

## **16 SAFETY REGULATIONS**

- 16.1 A boat which retires shall advise the Race Committee/Regatta Control, preferably by radio using the frequencies nominated in SI 20.3, as soon as possible. A boat shall also advise the reason for its retirement and its intentions, and shall maintain routine communication until safely in port. A boat which fails to advise its retirement may in its next race, or failing there being a next race, the previous race to which she retired, be scored three points more than her actual finishing position without a hearing. This changes rule 64.1 and A5.
- 16.2 Races for divisions 1 & 2 are classified Category 5 + EPIRB and 2 x Parachute Flares.

## **17 REPLACEMENT CREW**

- 17.1 Crew members may be substituted prior to any race. The primary helmsperson may be substituted without prior approval in writing by the Race Committee.
- 17.2 Before its first race each boat shall lodge a crew list in with the Regatta Office. Any subsequent changes shall be lodged before the first race in which it will take effect.

## **18 EQUIPMENT AND MEASUREMENT CHECKS**

A boat or equipment may be inspected for safety equipment and measurement compliance when required by the race committee at any time, except when racing. A boat shall comply with all reasonable requests from the race committee to facilitate inspection.

## **19 OFFICIAL BOATS**

Official boats will be marked with a RPYC burgee.

## **20 RADIO COMMUNICATION**

- 20.1 While racing all boats shall maintain a constant listening watch on the allocated frequencies.
- 20.2 A boat shall neither make radio transmissions while racing, nor receive radio communication not available to all boats. This restriction also applies to mobile phones.
- 20.3 Radio frequencies in use are:
- |               |                |
|---------------|----------------|
| All Divisions | VHF channel 77 |
|---------------|----------------|

## **21 BERTHING ARRANGEMENTS**

Berthing arrangements for both Mindarie Marina and the RPYC Annexe will be provided within the registration pack. This includes a map of both marina sites.

**22 PRIZES**

Prizes will be awarded in Division 1 & 2 to 1<sup>st</sup>, 2<sup>nd</sup> and 3<sup>rd</sup> in fleets consisting of eight or more entries. In fleets with seven boats or less prizes will be awarded to 1<sup>st</sup> and 2<sup>nd</sup> only. Encouragement and/or spot prizes will be awarded to Division 3.

**23 DISCLAIMER OF LIABILITY**

Competitors shall accept that participation at the regatta is entirely at their own risk. See Rule 4, Decision to Race. The OA, its officers, members, servants and other agents accept no liability in respect of loss of life, personal injury or loss or damage to property which may be sustained by reason of a competitor's participation or intended participation in the regatta or howsoever arising in connection with the event.

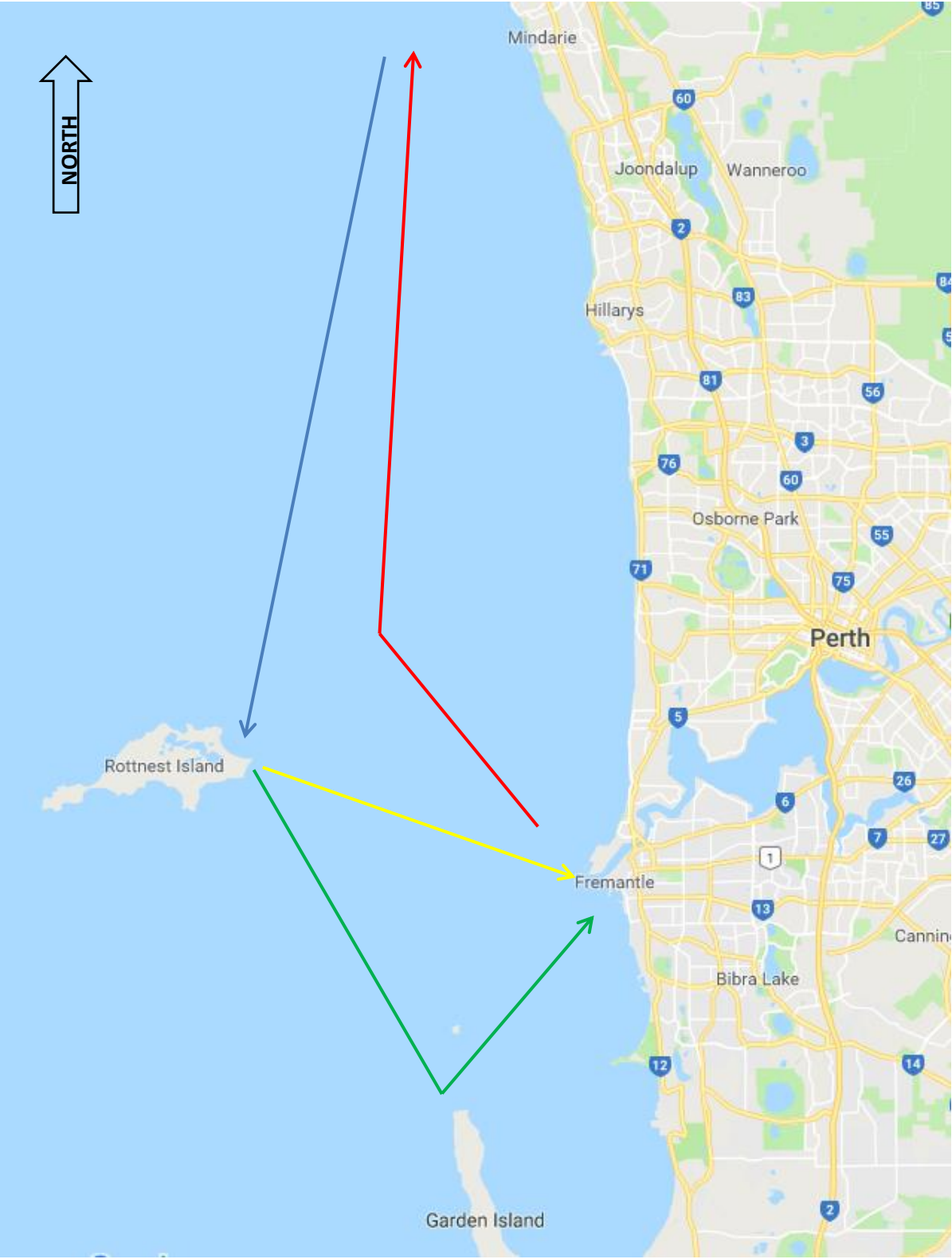
**24 INSURANCE**

All boats shall have valid third party liability insurance with minimum cover of not less than \$10,000,000. All owners/competitors who submit the entry form shall be deemed to have made a declaration that they hold such cover.

**ATTACHMENT A – RACE SCHEDULE**

<b>Date</b>	<b>Division</b>	<b>Race Type</b>	<b>First Warning Signal</b>
<b>Friday 26/04/2019</b>	2	Passage race	1205
	1	Passage race	1225
	3	Cruise in Company	1430
<b>Saturday 27/04/2019</b>	2	Passage race	0925
	1	Passage race	0945
	3	Cruise in Company	1130
<b>Sunday 28/04/2019</b>	2	Passage race	1015
	1	Passage race	1035
	3	Cruise in Company	1130

# ATTACHMENT B – RACING AREA



Leg 1  20nm

Leg 2  16nm

Leg 3  18nm

Leg 3 – Alternate  10nm



**ATTACHMENT C – PASSAGE RACE COURSES**  
**DIVISION 1 RACING & DIVISION 2 CRUISING**  
**PASSAGE RACE COURSES**

**Day 1 – Friday 26<sup>th</sup> April**

**20nm**

Start – Vicinity of Leighton	
Day Buoy*	
Fairway Buoy	S
Finish – Vicinity of Mindarie	

**Day 2 – Saturday 27<sup>th</sup> April**

**16nm**

Start – Vicinity of Mindarie	
Day Buoy*	
Finish – Vicinity of Rottnest	

**Day 3 – Sunday 28<sup>th</sup> April**

**18nm**

Start – Vicinity of Rottnest	
Day Buoy*	
CPPLB	P
ECPLP	P
No.12	P
<b>Gate:</b> No.10 "J"	P
	S
FSC "Y"	S
Finish – Vicinity of Fremantle	

**10nm – Alternate Course**

Start – Vicinity of Rottnest	
Day Buoy*	
Western South Passage Transit Beacon	S
Finish – Vicinity of Fremantle	

## ATTACHMENT D – PASSAGE RACE MARKS/START/FINISH POITIONS

### MARKS AND BUOYS

MARK	SOUTH	EAST	DESCRIPTION
Fairway	31° 57.10'	115° 38.90'	Fairway landfall buoy
FSC “Y”	32° 04.60'	115° 42.50'	Sparbuoy
“J”	32° 07.10'	115° 42.10'	“J” Channel Marker
CPPLB	32° 08.28'	115° 38.95'	Challenger passage Port Lateral Buoy
ECPLB	32° 08.70'	115° 40.20'	Eastern challenger Passage Lead Beacon
No.12	32° 08.20'	115° 42.20'	No.12 Channel Marker
No.10	32° 07.50'	115° 42.10'	No.10 Channel Marker
WSPTB	32° 01.30'	115° 37.10'	Western South Passage Transit Beacon

### START/FINISH LOCATIONS

START/FINISH	SOUTH	EAST	DESCRIPTION
Start Leighton	32° 01.90'	115° 42.70'	Within 0.5 nautical mile radius of this position
Finish Mindarie	31° 43.71'	115° 39.62'	Within 0.5 nautical mile radius of this position
Start Mindarie	31° 43.71'	115° 39.62'	Within 0.5 nautical mile radius of this position
Finish Rottnest	32° 00.49'	115° 34.18'	Within 0.5 nautical mile radius of this position
Start Rottnest	32° 00.49'	115° 34.18'	Within 0.5 nautical mile radius of this position
Finish Fremantle	32° 4.40'	115° 44.53'	Within 0.5 nautical mile radius of this position