



GET TO KNOW US



ROYAL PERTH YACHT CLUB OF WESTERN AUSTRALIA



CONTENTS

YOUR HOME AWAY FROM HOME	2	RPYC MARINA	16
Crawley Clubhouse	2	State of the art Marina	16
Catalina Bar and Alfresco area	3	PROTECTING OUR ENVIRONMENT	18
Wardroom Bar and Restaurant	3	Sustainability at RPYC	18
Fremantle Annexe	4	RPYC TRADITIONS	19
COMMUNITY SPIRIT	5	Our quirky traits	19
Membership	5	HOUSE SUPPORT SYSTEM	20
Social Events	7	How HSS works	20
LOVE OF THE WATER	8	USEFUL INFORMATION	21
Keelboat sailing	8	Things to remember	21
Keelboat racing	9	Other Member benefits	22
Power Events	10	HOST YOUR EVENT AT RPYC	23
Power Time Trialling	11	Weddings	23
RPYC Dinghy Division	12	Private and Corporate functions	24
Training Centre	13	CONTACT RPYC	25
ON WATER DEVELOPMENT	14	Learn more about our Club	25
Learn to Sail Courses	14		
Member Programs	15		



YOUR HOME AWAY FROM HOME

CRAWLEY CLUBHOUSE

Located just 10 minutes from the Perth CBD, our Crawley Clubhouse and state of the art Marina connects us to Perth's beautiful Swan River.

A home away from home, RPYC welcomes you to enjoy endless opportunities to relax and unwind amongst the picturesque surroundings.

No matter your area of interest, Crawley has it all. From fantastic function and dining facilities to a fully equipped sail training center.

Find your tribe at RPYC.

What you'll find at our Crawley Clubhouse:

- Club Fitness Centre
- Catalina Bar and Alfresco Area
- Dinghy Division
- Hardstand and Workshop
- Kids Playground
- Function Facilities
- Wardroom Bar and Restaurant
- RPYC Offices





YOUR HOME AWAY FROM HOME

CATALINA BAR AND ALFRESCO AREA

It's hard to stay away from our serene outdoor dining area. Members and their guests find it the perfect place to...

Relax ~ Unwind ~ Enjoy
Connecting RPYC to the Swan River

WHY NOT ESCAPE THE OFFICE FOR LUNCH?

With charging points and free wi-fi access, you can even bring the laptop down and work remotely under the gum trees.

WARDROOM BAR AND RESTAURANT

Offering remarkable views of the city skyline, our Wardroom restaurant and balcony is open 7 days a week!

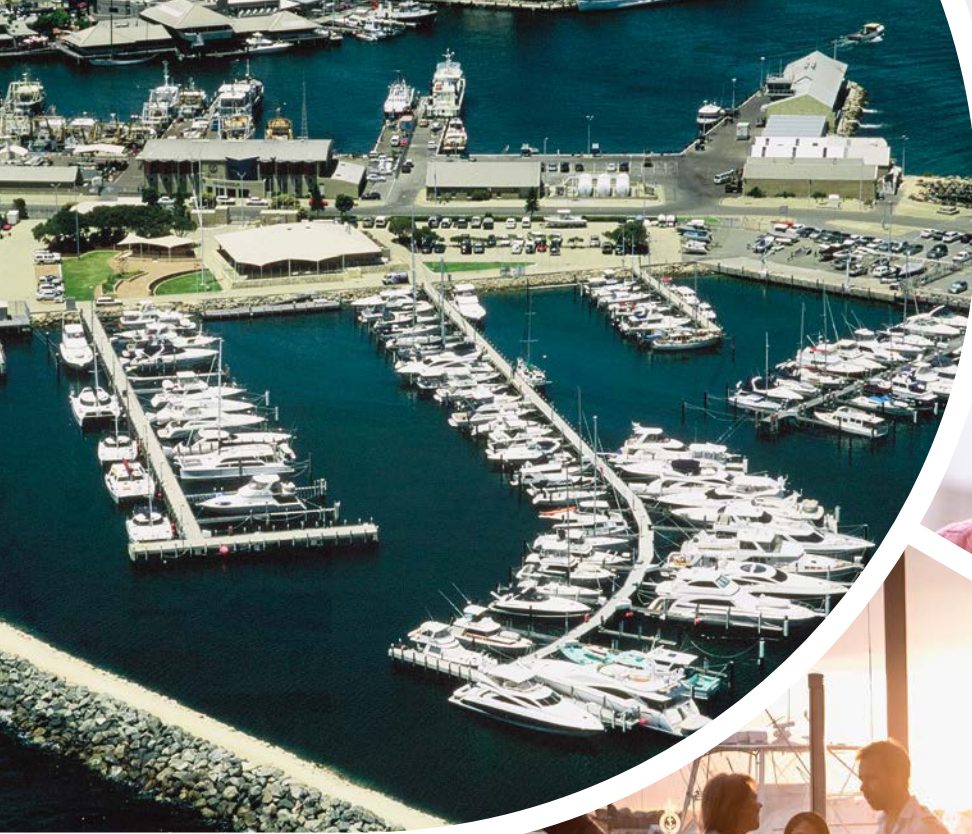
Why not join us for Tuesday Night Dining, Friday Night Grill or even Sunday morning Breakfast?

Our lunch menu never disappoints, with all the classics plus weekly specials.

See some of our delicious menus on our website

www.rpyc.com.au





YOUR HOME AWAY FROM HOME

FREMANTLE ANNEXE

With a second Clubhouse and Marina in the heart of Fremantle, RPYC Members can experience the best of both worlds. Discover what an ocean side facility has to offer!

Our Fremantle Annexe is the perfect location to start a weekend trip to Rottnest and provides a relaxing atmosphere to host your next bbq or private function.

Why not enquire about available pens at our ocean side Annexe?



Contact us to learn more
9389 1555 | membership@rpyc.com.au



COMMUNITY SPIRIT

MEMBERSHIP

As a Club, we are drawn together by our love for boating and passion for community.

For many of us, RPYC provides a second home where friends are truly family.

We offer opportunities for the whole family to get involved!

Membership incorporates a broad range of options, from Junior Membership through to Family Membership packages.

There's something to suit everyone.

Learn more about our Membership categories and benefits, visit

www.rpyc.com.au/membership/



Contact us directly, we're always happy to answer any questions you may have...
 9389 1555 | membership@rpyc.com.au





COMMUNITY SPIRIT

SOCIAL EVENTS

Enjoy socialising with friends and family?

Why not invite the crew down to one of our fantastic Club events?

As a Member, we encourage you to share the experiences with guests and make the most out of our social calendar!

Popular Club Events at RPYC include:

- Australia Day Party
- Themed Long Table Dinners
- Whiskey and Gin Tasting Events
- Family Socials
- New Members Nights
- Melbourne Cup
- Commodores Ball

Check out what's coming up next on the social calendar at RPYC.

www.rpyc.com.au

 @RPYCWA

 @rpyc





LOVE OF THE WATER

KEELBOAT SAILING

RPYC provides endless excuses for you, your crew and your family to get out on the water.

THURSDAY TWILIGHT CRUISING

Thursday evenings are for sunset cruises down our beautiful Swan River. A popular weekly event at the Club during the Sailing Season (October - April). Why not invite your friends and family down to enjoy Thursday night dining at the Catalina Bar?

CRUISE-IN-COMPANY EVENTS

Join one of our social on-water events such as RPYC's annual 'West Coast Tour', Rockingham Cruise-in-Company and Christmas Raft Up, just to name a few. Open to both Sail and Power Yachts, they are the perfect opportunity to socialise on the water!

CREWING

Want to join a Crew?

No matter your level of experience, there is always an opportunity to sail at RPYC. Complete the 'Crew Available' Form via our website or express your interest with our Boating Department.

Contact us to learn more

9389 1555 | boatingoperations@rpyc.com.au



LOVE OF THE WATER

KEELBOAT RACING

RPYC are proud to facilitate this fantastic sport all year round!

COMPETITIVE RACING

With a variety of fleets sailing out of our Club, you're sure to find a race to suit.

WEDNESDAY AFTERNOON RACING IS OFFERED YEAR-ROUND!

- Wednesday Winter Series
- Wednesday Summer Series

SATURDAY SUMMER SERIES

Divisional and Fleet racing | October - April

NIGHT RACING

6 Races | Monthly | Tuesday Nights | Under a Full Moon | October - April

WINTER FROSTBITE SERIES

7 Races | Fortnightly | Sunday Afternoons | May - August

Visit the 'On-Water' section on our website to learn more:

www.rpyc.com.au





LOVE OF THE WATER

POWER EVENTS

Our Power Boating Community are a welcoming and vibrant bunch who are always up for fun and adventure, on and off the water!

The Power Event calendar never ceases to disappoint, with a variety of 'Cruising-in-Company' events to choose from.

WHERE WILL RPYC'S NEXT POWER EVENT TAKE YOU?

Some locations we convoy to throughout the year:

- Mindarie
- Hillarys
- Rottnest Island
- Mandurah
- Rockingham





LOVE OF THE WATER

POWER TIME TRIALLING

TIME TRIALLING

The sport of Time Trialling is hugely popular at RPYC, and we encourage new and experienced boaties to get involved!

Keep your Power Boat moving over Winter with a series of competitive 'Heats' across a range of Perth metro Clubs.

RPYC TIME TRIALLING SEASON: MAY - SEPTEMBER

Visit the 'On-Water' section on our website to learn more:

www.rpyc.com.au





LOVE OF THE WATER

RPYC DINGHY DIVISION

ALL ABOUT OUR DINGHY DIVISION...

Whether you are joining solo or looking for an all-inclusive family community, we welcome you to join in the FUN!

Our Dinghy Division facilitates sailing opportunities for all ages, from juniors to teens to adults.

Join our Sunday training and racing fleets to get a taste of the action!

VOLUNTEERING

There are so many ways you can join in the FUN within our Dinghy Division community.

Why not volunteer?

We're always looking for dedicated individuals to assist with our on and off water activities. RPYC provide excellent skill development courses and training for our volunteer community.



Contact our Club Development Officer to learn more
9389 1555 | sailtraining@rpyc.com.au



LOVE OF THE WATER

TRAINING CENTRE

WINDSURFING AT RPYC

One of our most established on-water programs is thriving! We encourage Youth to get involved.

Our Training Fleets cater to a range of ages and skill levels.



OPTI FLEETS JUNIOR SAILORS | 7 - 12 YEARS

- Opti Green
- Opti Silver
- Opti Gold

LASER FLEETS TEENS - ADULTS | 13 +

- Laser/Pacer
- Laser

BOARD FLEETS YOUTH DEVELOPMENT | 13 - 17 YEARS

- Techno Silver
- Techno Gold
- Windfoil

Learn how to get involved in our Training Centre
Contact our Club Development Officer
 9389 1555 | sailtraining@rpyc.com.au



ON WATER DEVELOPMENT

LEARN TO SAIL COURSES

ADULTS LEARN TO SAIL

An introduction to your sailing journey.

Suitable for ages 18+, no matter your level of experience.

5 Saturdays | weekly |
All equipment provided

KIDS LEARN TO SAIL

Tackers courses are the perfect place for your junior to start.

Suitable for ages 7 - 12 years.

20 hours tuition | All equipment provided.

TEENS START WINDSURFING

Teens, start your windsurfing journey with RPYC!

Suitable for teens 12 - 17.

Bic Techno 293 Boards |
All equipment provided.



Contact RPYC to learn more

www.rpyc.com.au | 9389 1555 | reception@rpyc.com.au



ON WATER DEVELOPMENT

MEMBER PROGRAMS

We are dedicated to the ongoing development of our Members and sport here at RPYC.

As part of this dedication, we strive to work collaboratively with coaches and sailing associations to offer a variety of programs and training opportunities, with a focus on Women and Youth in sailing.

LOOKING TO UP-SKILL?

Just graduated from a 'Learn to Sail' Course? With so many varied opportunities on offer, you'll be spoilt for choice.

Find the right training program for you!



Contact our Boating Department for more information on how to get involved.
9389 1555 | boatingoperations@rpyc.com.au



RPYC MARINA

STATE OF THE ART MARINA

CRAWLEY MARINA

Our first class jetties are state of the art. Designed with safety and comfort in mind. Nestled in the sheltered waters of Matilda Bay, our 372 pens can accommodate vessels from 8 to 28 metres.

FREMANTLE ANNEXE

Providing seamless access to the Indian Ocean, why not overnight at our Fremantle Marina before venturing to Rottnest? Our 96 pens can accommodate vessels from 10 to 28 meters.

OTHER VESSEL STORAGE OPTIONS

- Hard Stand Bays. Including Post Crane access
- Tender and Kayak Racks
- Centreboard and Dinghy Storage. Contact our Club Development Officer to learn more!

Accessible 24 hours a day, all pens are fully equipped with power and water facilities.

Learn more about our Marinas

9389 1555 | membership@rpyc.com.au



RPYC MARINA

STATE OF THE ART MARINA

FUEL

A 24-hour refuelling jetty is available at the Crawley Marina, managed by Baileys Marine Fuel Australia. All fuel purchases will require a Baileys Marine Fuel Card.

You can contact Baileys to set up an account.

- Diesel
- Petrol

BLACKWATER PUMP

Blackwater pump-out facility is available 24 hours a day at the Crawley Marina, located near the fuel jetty.



HARDSTAND MAINTENANCE YARD

A range of services and facilities are available as part of RPYC's Crawley Hardstand area, including:

- Boat Lifter (32 tonne capacity with 5.1m beam)
- High pressure hose washdown area
- On-site Shipwright
- 22 concrete hardstand bays (power and water supply)
- Side arm cradles for yachts
- Portable stairs and ladders
- Oil and Battery disposal
- On-site parking, wi-fi and bathroom facilities

Learn more about our Hardstand services and facilities
9389 1555 | adminoperations@rpyc.com.au



PROTECTING OUR ENVIRONMENT

SUSTAINABILITY AT RPYC

RPYC are proud to hold environmental sustainability to the highest priority. Our local wildlife and pristine waters are a testament to the extensive measures we take as a Club to ensure the protection of our natural surroundings.

CLEAN MARINA ACCREDITATION

Since 2016, our Marina has remained a Level 3 accredited 'Clean Marina' and achieved 'Fish Friendly' "status", meeting the national standards set by the Marina Industries Association.

This extensive criteria recognises the achievement of rigorous environmental management systems, such as our comprehensive storm water

and filtration system located underneath our hardstand area to eliminate run-off pollution.

RIVER GUARDIANS PARTNER

RPYC work closely with the local government on programs aimed at protecting local fauna and marine life:

- **Dolphin Watch Program:** A collaborative, citizen science research and education project recognising the importance of Dolphins presence as an indicator of river and estuarine health.
- **Reel-it-in Program:** Aimed at reducing waste pollution and educating the community on the safe disposal of fishing lines and tackle.

WATER STATIONS

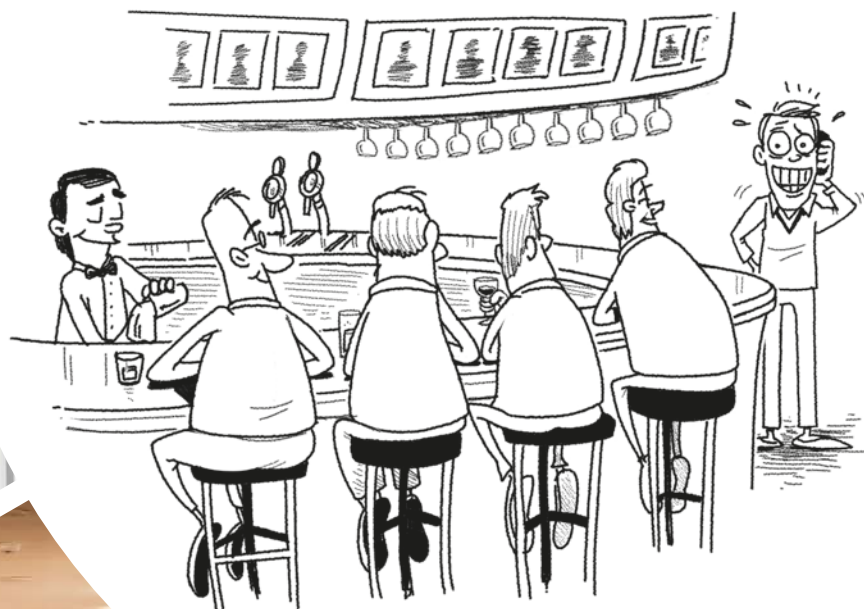
Our filtered water stations located on Club grounds help

save the use of thousands of plastic bottles every year!

RPYC SUSTAINABILITY TASKFORCE

Our committee are dedicated to the continual growth, development and implementation of environmentally friendly practices and policies at RPYC.

- No single use plastics
- Bio cups
- Glass recycling collection
- Industrial Sealed Waste compactor
- Comprehensive Emergency Oil Spill procedures and policies
- Bunded battery and waste oil collection
- Recycled storm water used for pressure washing
- Restricted use of fertilisers on Club gardens



*"Shame he wasn't wearing a hat too –
or he'd be shouting us 2 beers!"*

Chaffield



RPYC TRADITIONS

OUR QUIRKY TRAITS

SHOUTS

What is a 'shout' exactly?
Breaking any of the following rules in the Wardroom will see you ringing the bell and shouting the bar!

- Making a call
- Answering a call
- Wearing a hat

RINGING THE BELL

A well loved Club tradition!
In ringing the Bell, a Member will 'shout' a round at the Bar. Members can be asked to ring the Bell by the Flag Officers, or you can ask an Officer for permission to ring the Bell.

Which occasions count?

- breaking the rules (as listed above)
- celebrating a win
- celebrating a marriage
- celebrating a birth of a child

or any other significant occasion

PLEASE SIGN IN YOUR GUESTS

Please sign in your guests as you enter the Wardroom. In keeping with the Liquor Licensing rules, each Member is able to bring 5 guests to enjoy a relaxing beverage on the balcony. If there is more than 5 of you, we'll ask you to enjoy a meal with your beverages to meet the legal requirements.



HOUSE SUPPORT SYSTEM

HOW HSS WORKS

As a Club, we encourage Members to make the most of the facilities on offer. The House Support System levy is in place, charged to all Full, Full Family, Full Under 30, Social and Social Family Members, to provide value to your experience.

Broken down into two equal installments of \$120, this levy is charged to your Member Account every 6 months (1st June and 30th November).

REDEEMING YOUR HSS

Charge your Club purchases to your RPYC Member Account, it's as simple as that!

Spend \$120 on any of the following to receive a credit (up to \$120) back:

- Food and Beverage purchases
- Club Pro Shop purchases
- Club Event Tickets

Please note, if you have not spent the full amount of your HSS Levy within the period, the Club will invest the remainder into furthering Club objectives.



To Learn more about the HSS, contact:
9389 1555 | membership@rpyc.com.au



USEFUL INFORMATION

THINGS TO REMEMBER

SPEED IN THE MARINA

Please ensure a speed of max 4 knots is maintained within the marina at all times, and that all efforts are practiced to reduce wake.

SMOKING

Smoking is only permitted within designated areas of Club grounds. Please ask our friendly Club Staff for further direction.

DRESS STANDARDS

Smart Casual is appropriate for most occasions at RPYC. Shoes must be worn at all times. Sailing attire for organised Club racing shall consist of all white collared shirts, and all white or black shorts/trousers.

RPYC BURGEE

Fly your Club Burgee proudly! It can be displayed on a vessel while Members are onboard. It should remain above any other flag or pennant displayed. Don't forget to remove your Burgee when you leave your vessel, or you'll be shouting the bar!

WE'RE DOG FRIENDLY

All furry friends are welcome on outdoor Club grounds. Please ensure your pooch is on a leash when visiting us!





USEFUL INFORMATION

OTHER MEMBER BENEFITS

CLUB PRO SHOP

Visit our Club Pro Shop to find a wide range of RPYC Merchandise. Located in our Crawley Clubhouse Reception, you'll discover everything from casual sailing gear to fantastic gift ideas.

FITNESS CENTRE

Our Crawley Fitness Centre is available for Members - Enquire today to gain access to this fantastic additional facility.

PARKING

Full parking rights are allocated to Full and Full Family Members. Restricted parking benefits are allocated to Social, Social Family, Centreboard, Outport and Reciprocal Members. Please ensure your parking sticker is displayed clearly at all times whilst on Club grounds.

SUP BOARDING

RPYC has a fleet of 6 Stand-Up-Paddle boards available for Member use at any time! It's easy to sign up, just contact our Club Development Officer on 9389 1555 or email sailtraining@rpyc.com.au



HOST YOUR EVENT AT RPYC

WEDDINGS

Dream Weddings with spectacular views...

Nestled on the banks of the Swan River, RPYC is the perfect setting for a stunning waterfront wedding.

Plan the wedding of your dreams with personalised packages for ceremonies and receptions, including custom catering menus.

Work with our Wedding Team to create your custom Wedding package at RPYC.



Enquire today

9389 1555 | catering@rpyc.com.au



HOST YOUR EVENT AT RPYC

PRIVATE AND CORPORATE FUNCTIONS

Our Club proudly offers both versatility and flexibility, hosting a variety of options to accommodate unique and memorable occasions.

Why not enquire about our function spaces, available for:

- Business Meetings
- Corporate Presentations
- Birthday Celebrations
- Large Outdoor Events

With a vast range of catering options, learn how we can tailor to your event needs.



Contact our Functions Team today
9389 1555 | catering@rpyc.com.au



CONTACT RPYC

LEARN MORE ABOUT OUR CLUB

CONTACT RPYC and learn more about what our Club has to offer

Visit our website
www.rpyc.com.au



RPYC RECEPTION

9389 1555 | reception@rpyc.com.au
 Open Monday - Friday | 9 am - 5pm

MEMBERSHIP AND PEN ENQUIRIES

9423 5503 | membership@rpyc.com.au

FUNCTION ENQUIRIES

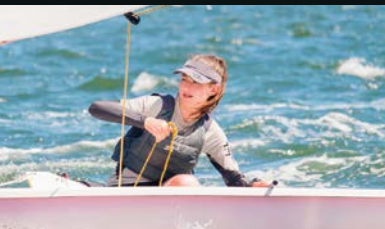
9423 5509 | catering@rpyc.com.au

BOATING DEPARTMENT

9423 5504 | boating_operations@rpyc.com.au

SAIL TRAINING

9423 5519 | sailtraining@rpyc.com.au





SEE YOU OUT THERE!

Correspondence: PO Box 5 | Nedlands
Western Australia 6909

Address: Australia II Drive | Crawley
Western Australia 6009

T: (08) 9389 1555
E: club@rpyc.com.au

ABN: 21 894 707 808

 rpycwa
 @rpyc | @rpycevents

www.rpyc.com.au

